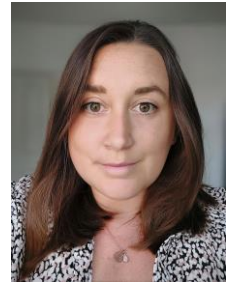


Dr Natasha Anderson

BSc, D.Clin.Psy.



Clinical Psychologist Specialising in Neuropsychology

Compassionate, person-centred psychologist with experience providing neuropsychological assessment and intervention. I work with diverse clinical populations including acquired and traumatic brain injury, functional neurological disorder, multiple sclerosis and individuals with diverse cognitive difficulties. I am used to working in various settings such as community rehabilitation, inpatient and outpatient environments. I have experience in service development, having supported the establishment of a standalone community rehabilitation service whilst acting as a clinical lead.

I thrive in multi-disciplinary team environments, advocating for the psychological perspective and promoting quality service provision through collaboration. My additional training in systemic approaches enables me to develop a holistic understanding of clients within their relational and social contexts. This enhances intervention for the individual and supports tailored input for families and care networks to promote understanding and adjustment.

Contact details

I undertake private work as an associate with Newby Psychological Services and can be contacted at: info@newbypsychological.co.uk / +44 (0)7775 437363

Qualifications

PGDip Clinical Neuropsychology

University of Bristol - current

Doctorate in Clinical Psychology

Additional qualifications during Doctorate studies:-

Foundation Level Systemic Training (Accredited by Association of Family Therapy)

Level 2 Cognitive Behavioural Therapy Training (Accredited by British Association for Behavioural and Cognitive Psychologies)

University of Surrey – 2020

BSc Psychology

Southampton Solent University – 2013

Membership of Professional Bodies

- Registered Clinical Psychologist - Health Professionals Council (HCPC No. PYL38935)
- Registered as a Chartered Psychologist

Experience

Clinical Psychologist in Neuropsychology

Newby Psychological Services Ltd

May 2025-Present

In my role with Newby Psychological Services, I am primarily providing neuropsychological rehabilitation and therapy to support those affected by acquired brain injury. This includes those also affected by trauma, functional neurological disorders, and conducting capacity assessments.

Highly Specialised Clinical Psychologist in Neuropsychology

October 2020-Present

West London NHS Trust, London

Neuropsychological assessment and interventions for adults with a wide range of presentations in a community neurorehabilitation service. Consultation and joint working with MDT colleagues. Designed and facilitated group interventions and delivered training. Provided neuropsychological input into an acute stroke ward.

Trainee Clinical Psychologist

2017 – 2020

Surrey and Borders Partnership Trust, Surrey

Specialised in neuropsychology during placement within a Community Neurorehabilitation service, alongside core placements in order adult, learning disability, adult mental health and child and adolescent services. Conducted neuropsychological assessments and provided interventions for clients with ABIs and older adults with queried cognitive impairment.

Assistant Psychologist

2015 – 2017

South Tees Hospitals NHS Foundation Trust, Teesside

Administered, scored and drafted reports for neuropsychological assessments in an outpatient neuropsychological service. Provided supervised cognitive and psychological interventions in community, outpatient and ward settings.

Relevant CPD

- Ongoing PGDip in Clinical Neuropsychology, University of Bristol.
- ACT for Physical Health Conditions (2023)
- Mindfulness-based Cognitive Therapy (2017)

Publications

Williams, T., Brechin, D., Muncer, S., Mukerji, N., Evans, S., & Anderson, N. (2019). Meningioma and mood: exploring the potential for meningioma to affect psychological distress before and after surgical removal. *British Journal of Neurosurgery*, 33(4), 383–387.

Hill, G., Anderson, N., Hynd, N., Wheeler, M., Evans, S.J., & Price, J. (2017a). Living Well with Neurological Conditions: Preliminary Analysis of Stroke Survivor Psychological Outcomes following an adapted ACT-informed Group Psychotherapeutic Intervention. UK Stroke Forum November 2017.

References

Reference contact details available on request.